



COLORADO

Department of Transportation

Colorado Highway 7 (Lower) Public Meeting Feb. 10



Virtual Meeting Overview

- All participants are muted and videos will be turned off
- If you would like to ask a question, please type it in the chat box at the bottom of your screen
- Unfortunately, folks joining by phone will not be able to see the presentation or participate in polls.
- There will be a time for Q&A at the end
- This meeting will be recorded and posted to the website following the meeting



Introductions



Heather Paddock
Heather.Paddock@state.co.us



Brian Varrella
Brian.Varrella@state.co.us
303-546-5649



James Zufall
Jamesd.zufall@state.co.us
303-546-5660



Agenda

- Project Purpose and Overview
- CM/GC Project Delivery
- Traffic Impacts
- Project Schedule
- Adjacent Projects



Poll Question

- We want to get to know you! Please select the option that best describes you.



CO 7 Lower Project Goals

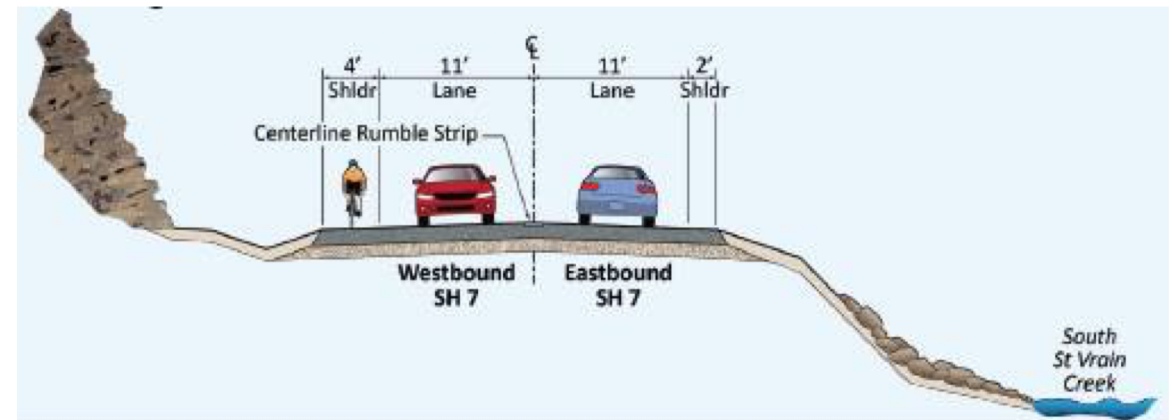
- The Colorado Highway 7 (CO 7) Lower Canyon project is the final flood recovery permanent repair project in the state.
- The major goals of this project
 - Maintain access during future flood events
 - Build a safe system
 - Accommodate multi-modal transportation options
 - Work in harmony with ecological river functions in the corridor.
- The permanent repair project will:
 - Resurface and repair approximately 14 miles of roadway
 - Rehabilitate 3-4 miles of the St. Vrain Creek disturbed during the emergency repairs
 - Expanding multi-modal mobility options with an uphill shoulder
 - Maintain essential access during major flood events



CO 7 Lower Project Overview

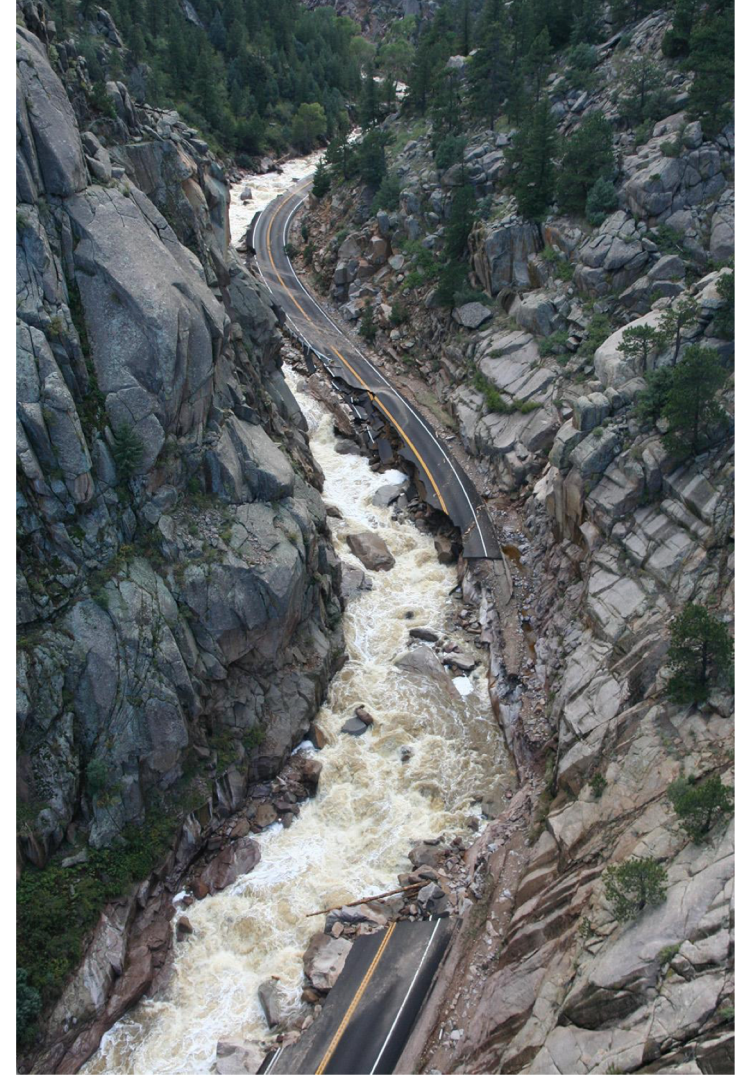
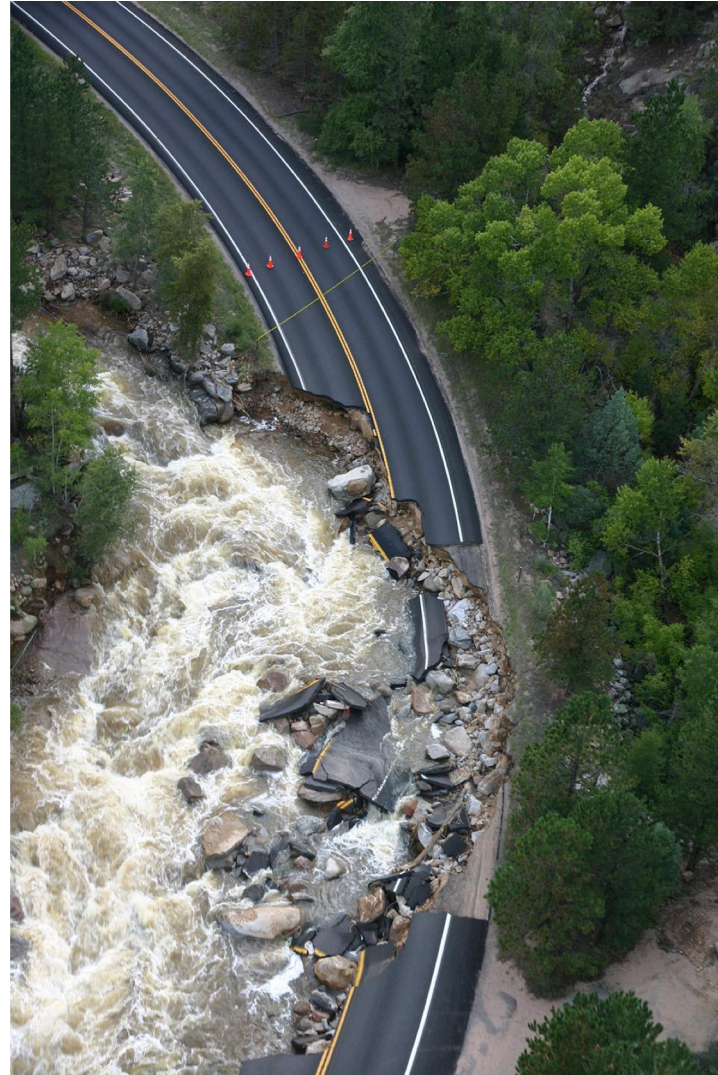
Permanent Flood Repair Requirements and Expectations:

- Rebuild the foundation of the roadway.
- Widen the roadway shoulders wherever possible.
- Rehabilitate the river where rocks and material were removed during the Emergency phase.
- Build measures to provide vehicle access during future flood events
- Conduct minor rock scaling to reduce the risk of rockfall.
- Resurface existing pavement to repair damage from 2013.
- Minor guardrail improvements





CO 7 Lower Project Overview





CO 7 Lower Project Overview







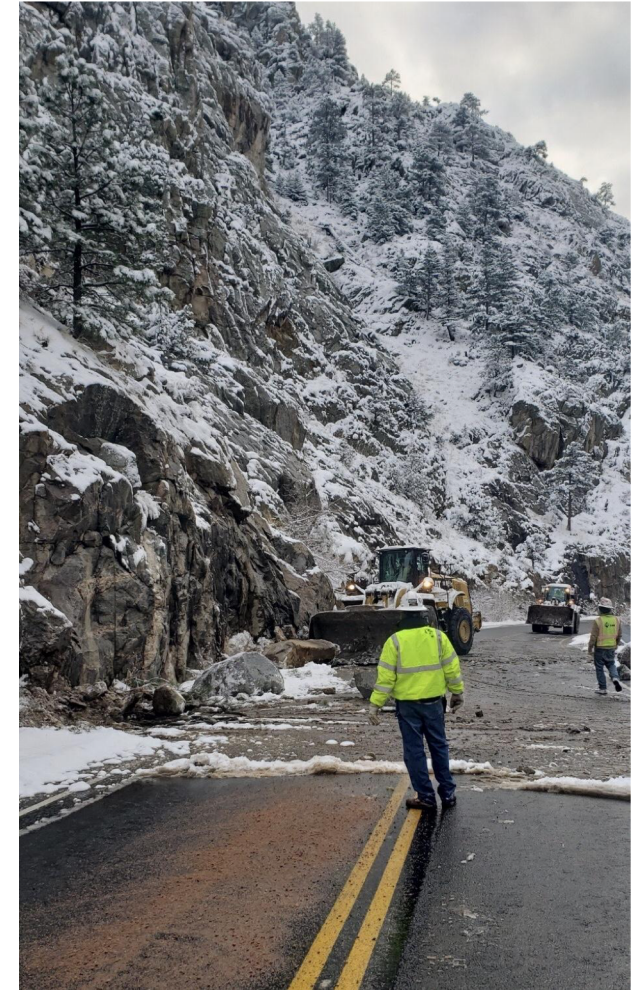
Poll Question

- Which project design feature is most important to you?



What is a CM/GC?

- This is a Construction Manager/General Contractor (CM/GC) Project
 - Contractor hired during the design phase.
 - Assists with innovation, cost, and constructability.
- This corridor has more work to do than budget allows.
 - CM/GC maximizes the use of available funds.
 - Innovation improves efficiency and effectiveness of design.





Stakeholder Outreach and Support

- Boulder County
- Boulder County Parks and Open Space
- Estes Park
- Longmont
- Lyons
- Emergency Services & Law Enforcement
- St. Vrain School District
- Forest Service
- Cycling Groups
- U.S. Fish and Wildlife Service
- Postal Service
- Colorado Parks and Wildlife
- Trout Unlimited
- Watershed Coalition
- US Army Corps Engineers
- Water users
- CDOT and Boulder County Road Maintenance/Snow Plows



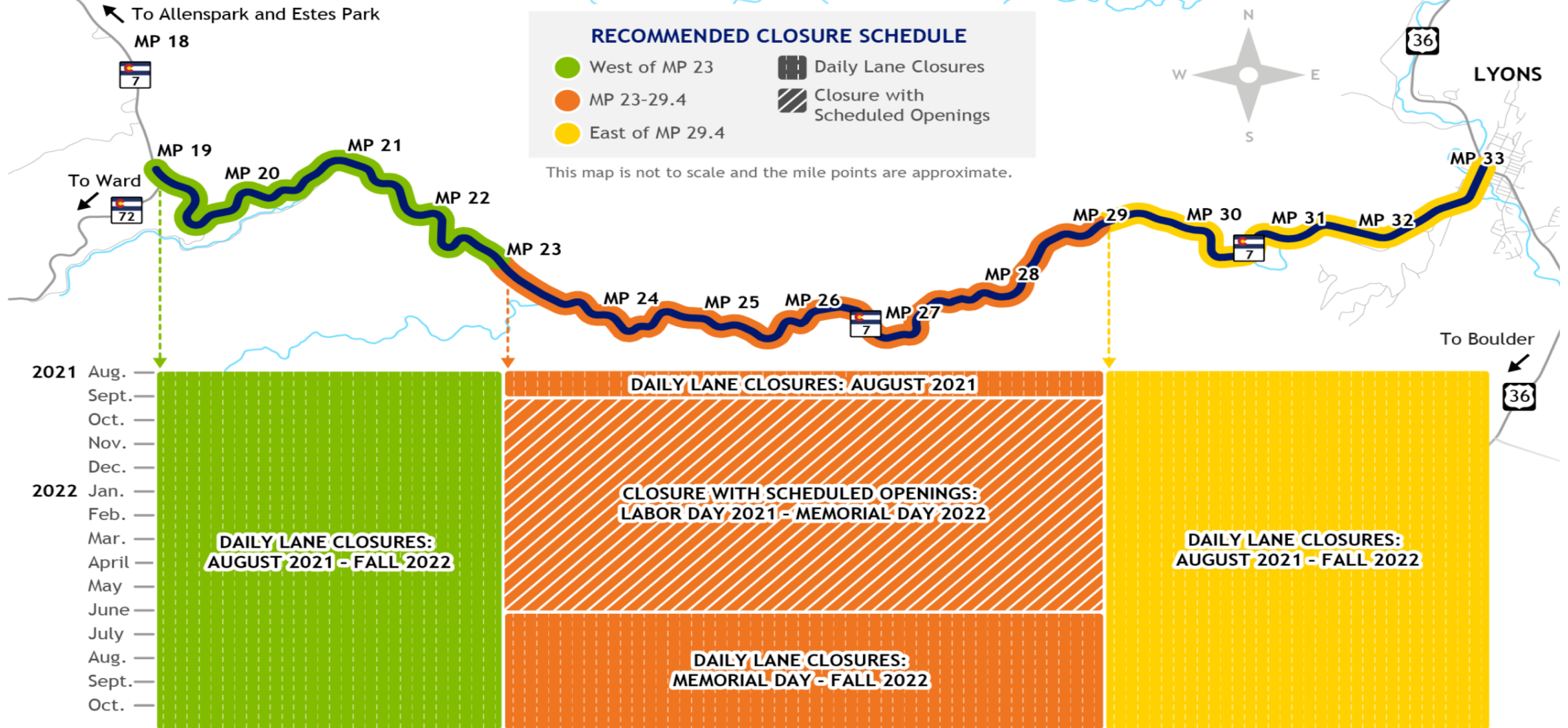


Traffic Impact Timeline

- August 2021; daily single-lane closures begin
- Labor Day 2021 - Memorial Day 2022
 - Full closure between Mile Points 23-29.5
 - Morning and evening “scheduled openings” for all traffic
 - Night and weekend work
 - Pilot car operations will maintain safe operations.
 - School buses will get through on time.
 - Closed to cycling and river recreation
 - Emergency responder access will be maintained at all times.
- After Memorial Day 2022
 - Minimized traffic impacts
 - Single-lane closures
 - Intermittent delays through Fall 2022



Colorado Highway 7 (Lower) Project Map

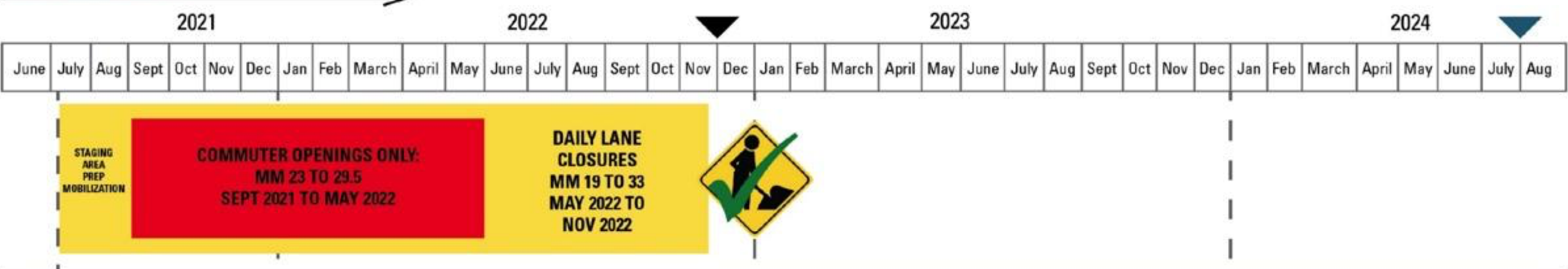


Colorado Highway 7 will be open to all traffic for Labor Day and Memorial Day weekends.



Project Schedule

RECOMMENDED COMMUTER OPENINGS



R4 LANE CLOSURE



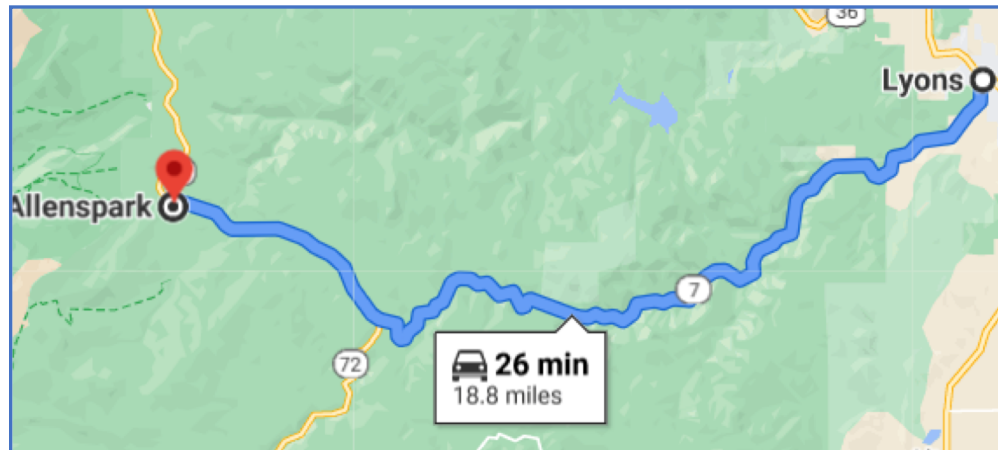
There is a potential for delays during the yellow closure time frames.

Potential for unpredictable 40 minute delays

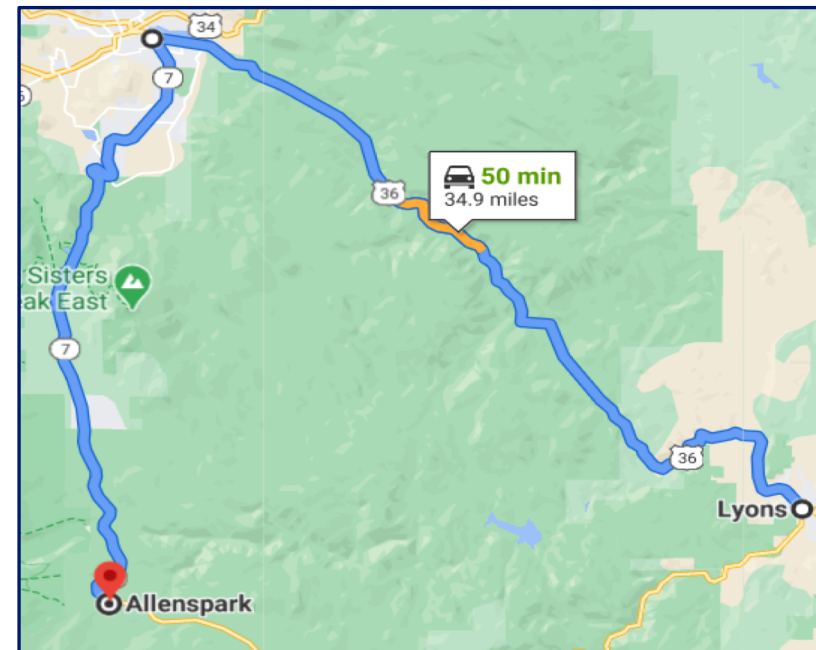


Lyons to Allenspark

Standard Route = 26 minutes

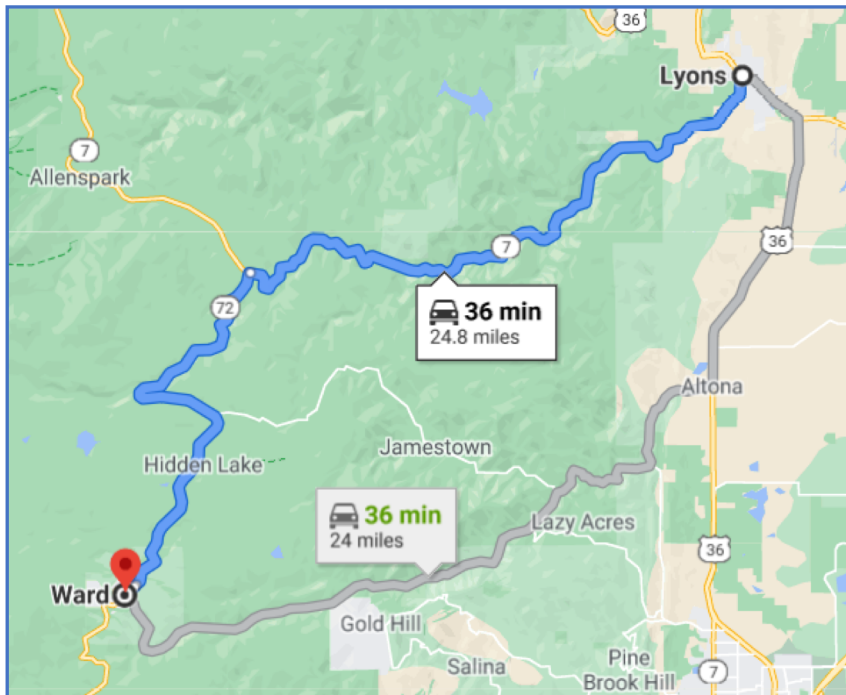


**Alternate Route = 50 minutes
(adds 24 minutes travel time)**

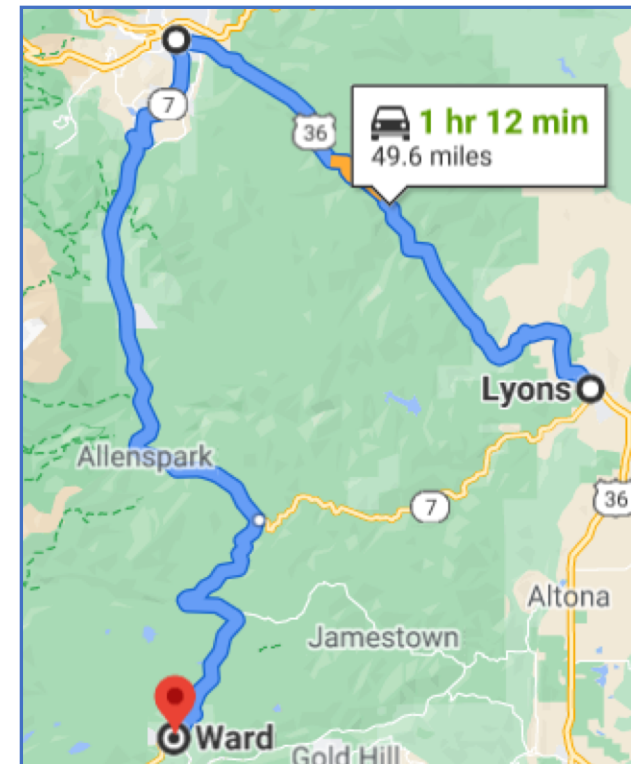


Lyons to Ward

Standard Route = 36 minutes



Alternate Route = 72 minutes
(adds 36 minutes travel time)

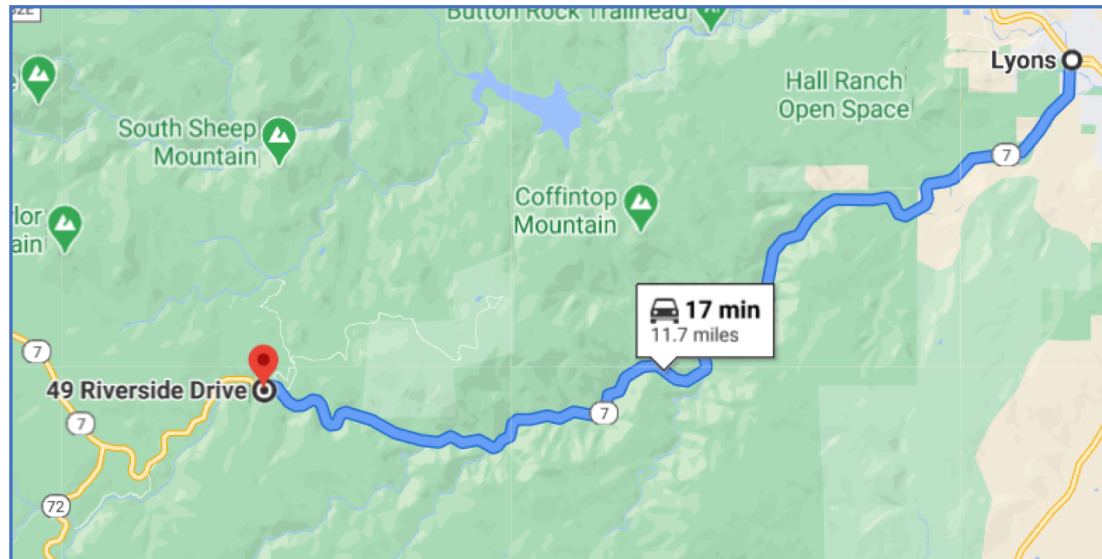




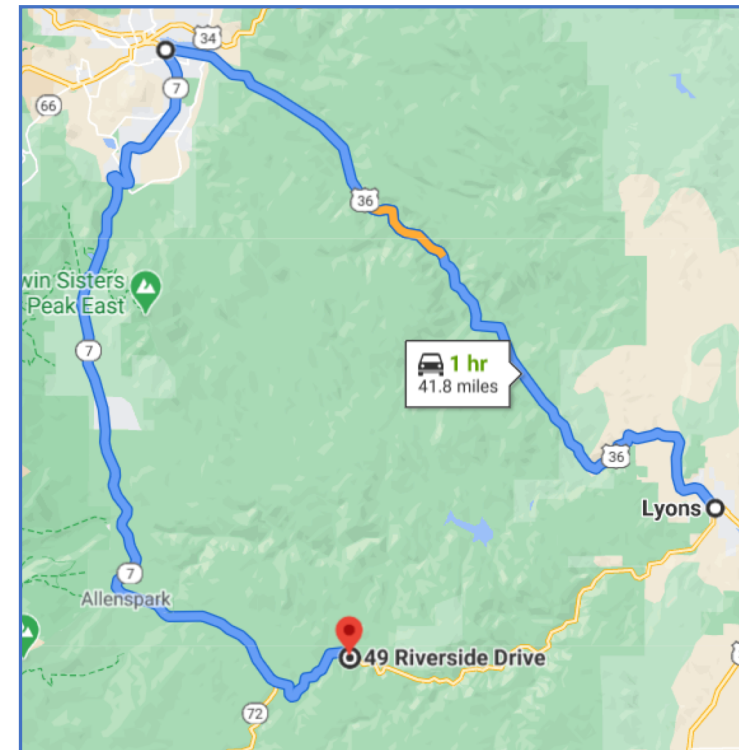
Detour Routes

Lyons to Riverside Drive residences

Standard Route = 17 minutes

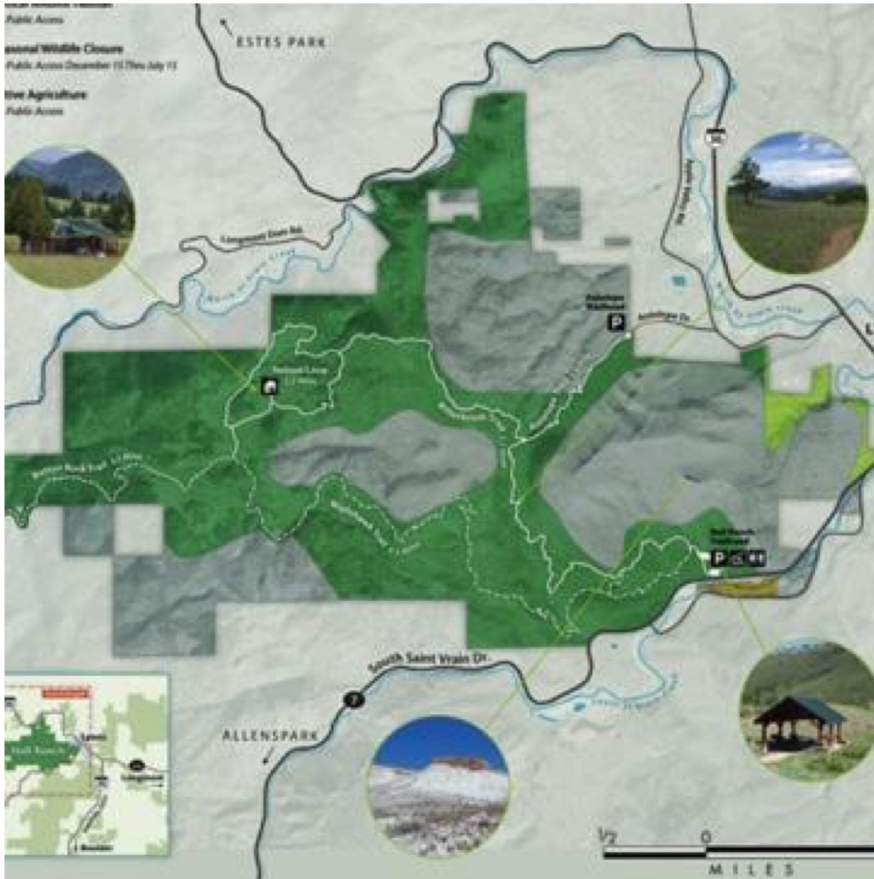


**Alternate Route = 60 minutes
(adds 43 minutes travel time)**





Recreational Activities



Bicycling

- The canyon within construction limits will be closed to bicyclists, and detours around the canyon will need to be used. Access to trailheads will remain open by vehicle.

Fishing and Kayaking

- Fishing and kayaking within the South St. Vrain Creek will be unavailable during construction.



Poll Question

- What's your greatest point of concern around a full closure of CO 7?



Poll Question

- **What's your second greatest point of concern around a full closure of CO 7**



Poll Question

- Which hour increment would you most utilize to travel CO 7 (Lower) in the evenings?



Adjacent Projects

PROJECT	COMPLETION DATE	MORE INFORMATION
Colorado Highway 119	Late Spring 2021 All blasting has been completed	https://www.codot.gov/projects/co-119-boulder-canyon-improvements
Colorado Highway 72	COMPLETE	https://www.codot.gov/projects/archived-project-sites/co-72-coal-creek-canyon-1
US 36 Mile Post 8	Spring 2021	https://www.codot.gov/projects/floodrelatedprojects/us-36-lyons-to-estes
US 36 Safety Improvements	Fall 2021	Website not available yet



Poll Question

- Which communication methods would you use the most often to receive project update information?

Thank you for your participation!

- To learn more about this project, please visit <https://www.codot.gov/projects/co7>
- Project hotline: 720-912-8870
- To sign up for weekly emails, please send your email address to: CO7info@kiewit.com
- To sign up for text alerts, please text CO7UPDATES to the number 21000



Questions?

